



COMPACT SINGLE STAGE VACUUM ACTUATED *Demand Flow Regulators*

4903 SERIES

PREMIER INDUSTRIES

1590 99th Ln NE,
Minneapolis, MN 55449
763-786-4020



MADE IN THE USA

Minneapolis, MN

DESCRIPTION

Patented Premier 4903 demand flow regulators save you time & money on calibrations by transferring the precise amount of gas required by a pump drawn instrument. As long as the pump is active, the regulator will remain “open” and gas will flow. When the pump stops, the regulator will turn off. The result? Less wasted gas, and lower calibration costs. These new vacuum actuated regulators are built with patented technology, eliminating the need for shut off valves, sample bags, or specially trained operators, making your calibrations quick & easy.

The compact and economical Premier 4903 regulator is available with a variety of body, diaphragm, and sealing materials to suit a variety of calibration gas requirements. Premier 4903 Series regulators permit reduced testing time, with their ability to begin flow of gas at <3” H₂O vacuum.

Commonly used with: portable gas detectors, gas analyzers, calibration gases, and pump drawn instruments.

FEATURES

- Compact size (2” diameter x 1.7” high)
- Patented single stage design
(*patent no.: 8,550,113 B1*)
- Stainless steel body option with stainless wetted components provides minimum degradation to cylinder gases.
- Available for both corrosive and non-corrosive service
- Machined bar stock bodies eliminate porosity found in castings
- Reduced particle contamination with 40 Micron stainless steel inlet filter
- Very competitive pricing

*The Premier 4903 Series pressure reducing regulator's design is remarkably flexible.
Contact Premier Industries for a custom Premier 4903 Series regulator to meet your exact needs.*

D/C: 181304



COMPACT SINGLE STAGE VACUUM ACTUATED *Demand Flow Regulators*



SPECIFICATIONS

- **DEMAND PRESSURE:** < 3" H₂O
- **MAX INLET :** 3000 PSIG
(with appropriate inlet connection)
- **WEIGHT:**
 - 1.2 lbs *(Stainless Steel Body, Gauge, C10 connection & hose barb)*
 - 0.6 lbs *(Aluminum Body, Gauge, C10 connection & hose barb)*

MATERIALS OF CONSTRUCTION

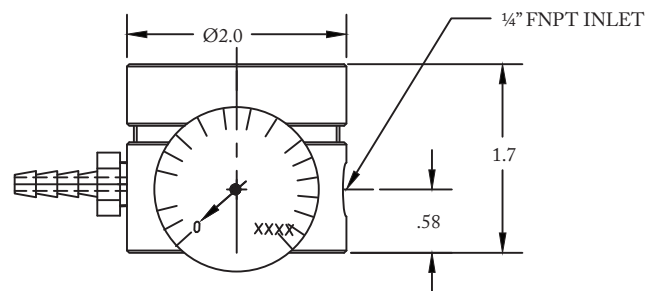
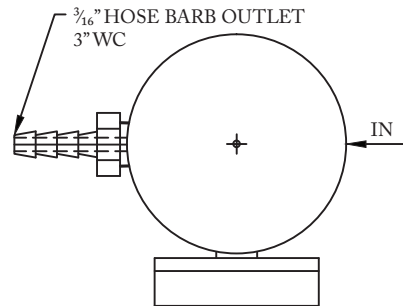
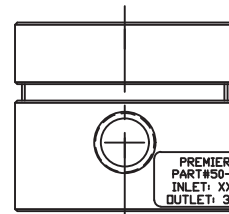
- **BODY OPTIONS:**
 - 303 Stainless Steel
 - 6061-T6 Aluminum, Clear Anodize
 - SAE 360 Brass, Nickel Plated
- **BONNET:**
 - 6061-T6 Aluminum, Clear Anodize
- **VALVE SEAT :**
 - PTFE *(Standard)*
- **O-RING SEAL OPTIONS:**
 - Viton® *(Standard)*
 - EPDM
 - numerous other compounds available
- **DIAPHRAGM OPTIONS:**
 - Buna-N *(Standard)*
 - Viton®
- **INLET GAUGE OPTIONS:**
 - Brass Socket / Stainless Steel Case *(Standard)*
 - Stainless Steel Socket / Stainless Steel Case

PORTING

- **INTEGRATED INLET PORTING OPTIONS:**
 - 1/4 FNPT *(Standard)*
 - 1/8 FNPT
- **OPTIONAL INLET ADAPTER CONNECTIONS:**
 - C-10 (5/8-18 UNF) *(Standard)*
 - CGA 180
 - CGA 350
 - CGA 330/660
 - CGA 580/590
 - CGA 600
- **OUTLET PORTING OPTIONS:**
 - 3/16" hose barb *(Standard)*
 - 1/4" hose barb
 - 1/8" hose barb
 - 1/4" FNPT
 - 1/8" FNPT

OPTIONAL ITEMS

- CGA Connections
- Porting configuration
- Private label



(Part number: 50-12186-X shown above)

ORDERING

- **STANDARD:** part number: 50-12186
- **NON-STANDARD:** P/N assigned per requirements