

CHECK VALVE



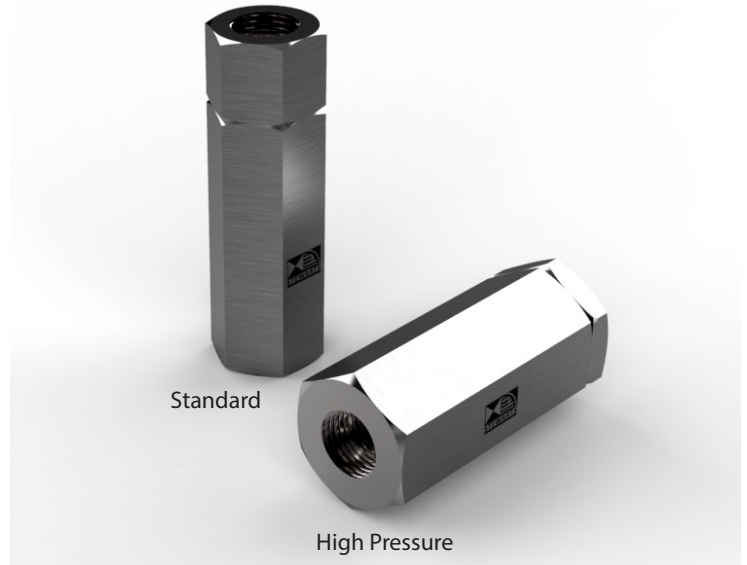
Standard Rating = 6000 psi (414 bar) (HP 10000 psi (690 bar) rating)

APPLICATIONS

An in-line check valve has a spring that will 'lift' when there is pressure on the upstream side of the valve. The pressure needed on the upstream side of the valve to overcome the spring tension is called the 'cracking pressure'. When the pressure going through the valve goes below the cracking pressure, the spring will close the valve to prevent back-flow in the process.

Features

- Hydrostatically tested to 1.5 times maximum working pressure.
- Has trace code on body with material certificates available for all wetted parts on request.
- Various end connections available-NPT-BSP-BSPT-etc.
- Can be supplied to NACE MR-01-75-Latest edition.
- Corrosion resistant spring for long life.
- Non return valve, available in 6000 psi and 10000 psi versions.
- Soft seat for bubble tight close.
- Seal Materials:- Viton (Standard) (Other options available see chart).
- Large thru bore for max flow and low pressure drop.



Standard Construction = 316 St.St. with Viton Seal and St.St. Spring.
 Standard Construction = MONEL® with Viton Seal and MONEL® K500 Spring.
 Standard Construction = INCONEL® 625 with Viton Seal and INCONEL® X-750 Spring.
 Standard Construction = HASTELLOY® C-276 with Viton Seal and HASTELLOY® C-276 Spring.

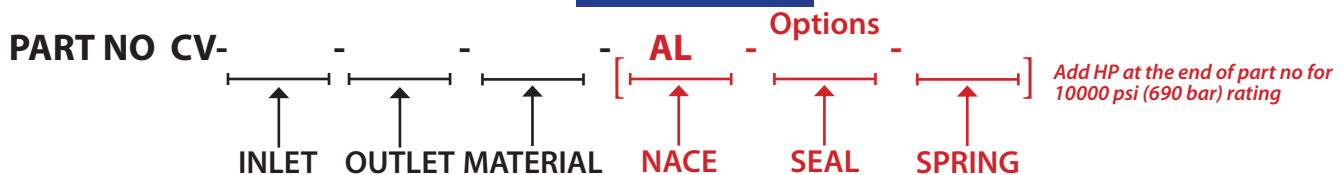
| Female Inlet & Outlet | Bore |
|---|---------|
| 03F = ¼" NPT | 11.1mm |
| 04F = G¼B or G¼ (BSPP) | 11.1mm |
| 05F = ⅜" NPT | 13 mm |
| 06F = G⅜B or G⅜ (BSPP) | 13 mm |
| 07F = ½" NPT | 13mm |
| 08F = G½B or G½ (BSPP) | 13 mm |
| 13F = R¼ or Rc¼ (BSPT) | 11.1 mm |
| 14F = R⅜ or Rc⅜ (BSPT) | 13 mm |
| 15F = R½ or Rc½ (BSPT) | 13 mm |
| Other sizes available on request | |
| Key | |
| G = Parallel Female ISO228-1 | |
| Rc = Taper Female BS 21 | |
| NPT = Taper Female ASME B1.20.1 | |

| Material | |
|--|--|
| AI = 316L Stainless Steel (UNS S31600 / S31603) | |
| MO = MONEL® 400 (UNS N04400) | |
| HA = HASTELLOY® C-276® (UNS N10276) | |
| IL = INCONEL® 625 (UNS N06625) | |
| IN = INCOLOY® 825 (UNS N08825) | |
| TI = TITANIUM Gr.2 (UNS R50400) | |
| DU = DUPLEX (UNS S31803) | |
| SD = SUPER DUPLEX (UNS S32760) | |
| HC = HASTELLOY® C-22 (UNS N06022) | |
| SA = SUPER AUSTENITIC ST.ST 6%Mo (UNS S31254) | |
| Note: Other materials available on request. | |

| Seal Options Material Codes | |
|-----------------------------|--------------|
| NO | Nitrile |
| KO | Kalrez® 6375 |

| Spring Options Material Codes | | CP |
|-------------------------------|------------------|------|
| AI | 316 SS | 7psi |
| MO | MONEL® k500 | 7psi |
| IN | INCONEL® x750 | 4psi |
| HA | HASTELLOY® C-276 | 4psi |

HOW TO ORDER



STEWART-BUCHANAN GAUGES LTD

Sales Office & Manufacturing Facility - 7 Garrell Road, Burnside Industrial Estate, Kilsyth, Glasgow G65 9JX, SCOTLAND
 Tel: +44 (0)1236 821533 | Fax: +44 (0)1236 824090 | E-mail: sales@stewarts-group.com | Web: stewarts-group.com

